

Marina Design Works & Olal`Art present

14 | 10 | 22 > 2 | 11 | 22

S I G N A L S

SALLY GABORI | DADDA SAMPSON | KUMARI NAHAPPAN | JON ONE | ANN NIU | XUE SONG
DELPHINE COURTILOT | PAJI HONEYCHILD | DAISY JUGADAI | ALISON MULTA | RAYKEN
ALMA NUNGARRAYI | TIGER PALPATJA | TARKU ROSIE TARCO | WENTJA NAPALTJARRI TWO
WAYAN NOVI | NARPUTTA JUGADAI | LI DE ZHUANG | DAVID ROBERTSON | LINDA NGITJANKA

63 SPOTTS ART GALLERY

63 Spottiswoode Park Road 088651 Singapore



MARINA DESIGN WORKS



SIGNALS

"I choose pointillism to depict the ideas that I have in my mind, the lives of human beings are like millions of dots. Those dots make us alive and make us beings. There are dots of happiness, dots of sadness and hope and there is neither a start nor an end ..."

WAYAN NOVI Indonesia artist – on his Luxuo's interview 2021

The exhibition is featuring a selection of Contemporary Aboriginal Australian Art from private collectors echoing with Chinese, Indonesian, European and Malaysian artists with a common expression of dots and signals.

At the time we are looking for reconnection to human beings and nature, we observe in the artists's works a converging inspiration for the contemplation of nature expressing a sense of belonging for their country of origins and looking for a primary form of expression connected to the soul of nature.

For the aboriginal artists depending of the region they belong to, each painting depicts a particular story of the desert and express the link with their community of artists and their origins.

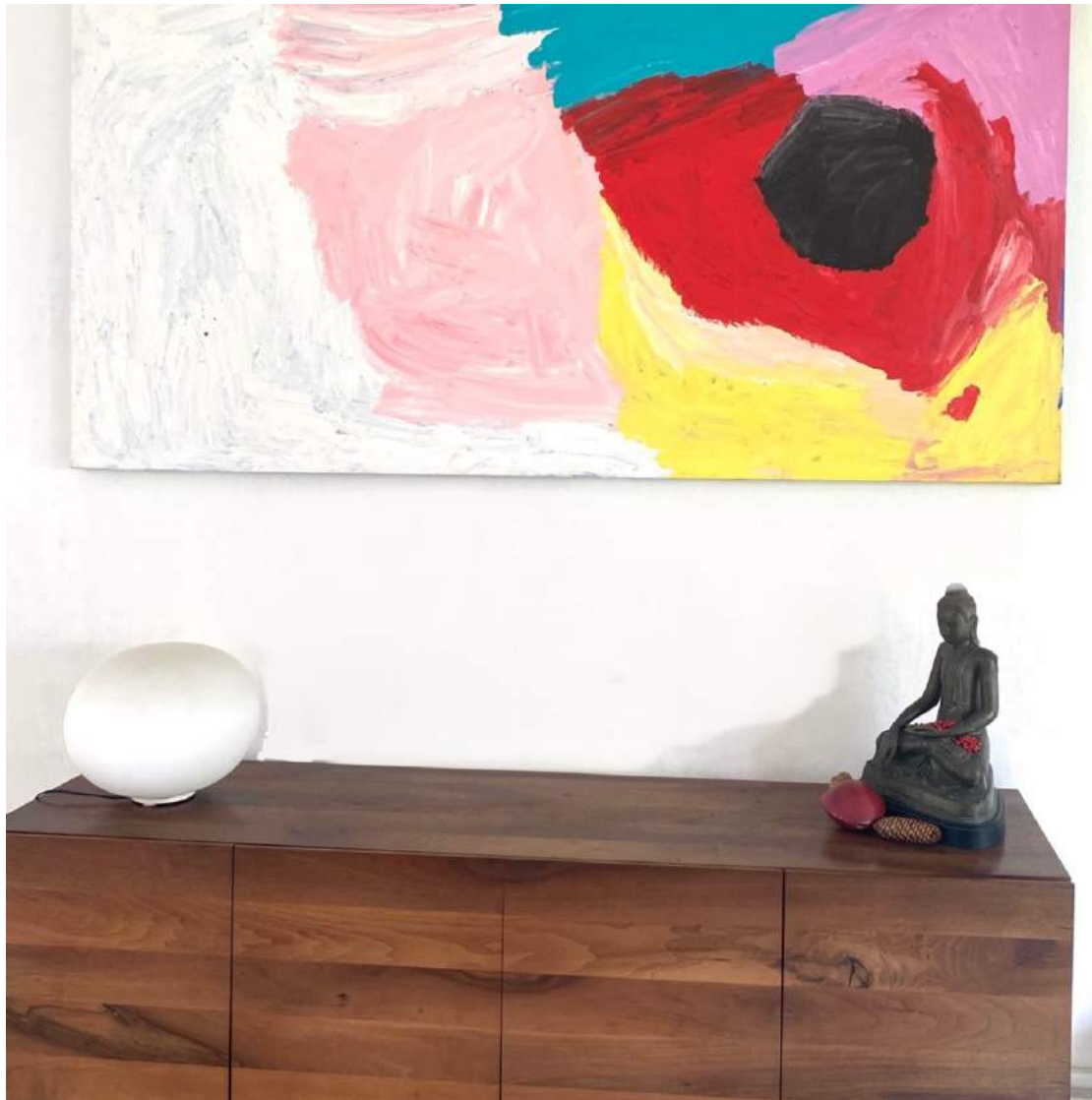
We can't help but to wonder why?

One response is the close connection of pointillism in art history through different period and territories. Another one is more abstract and spiritual, the quality of the dots are an invitation to contemplate and to accept our inner values, the labour of the fields, the time to appreciate and to slow down.

From the Aboriginal art from the bush in Australia to the seeds sculptures of the Malaysian artist Kumari Nahappan we travels through stories and memories of the origins. The artists explore strong colors palettes inspired by nature and different mediums such as ink, brass, textile art, painting and ceramic.

Curated by Marina Oechsner de Coninck

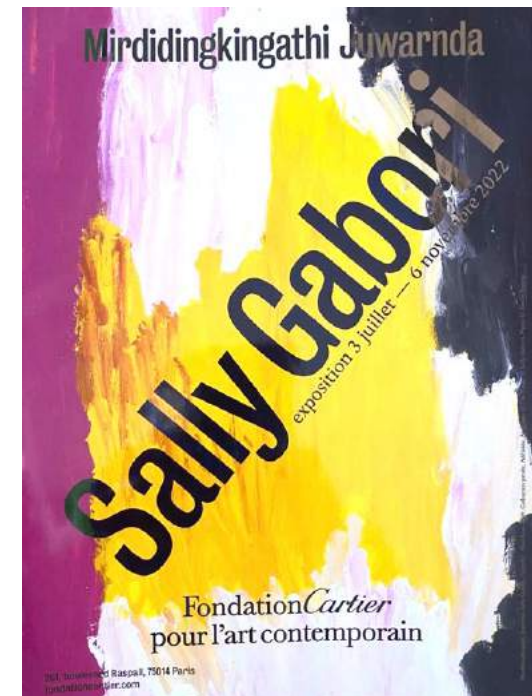
SALLY GABORI
CONTEMPORARY ABORIGINAL ART COLLECTION



SALLY GABORI - Acrylic on linen
183 x 95 cm Private collection
NOT FOR SALE

KUMARI NAHAPPAN – SAGA SEED
BRONZE Private collection

Sally Gabori was an Australian aboriginal artist known for her colorful and expressive abstract paintings. Each work acted as a translation of her personal and mythological experiences of aboriginal culture. Born Mirdidingkingathi Juwarnda circa 1924 in Bentinck Island, Australia, her early life was spent hunting and gathering in a wholly indigenous culture. Contacted by Christian missionaries in the 1940s, Gabori and her family were forced to move to a reservation on Mornington Island. Though she was versed in weaving throughout her life, she only began to paint in 2005. In a short span of time, her art career skyrocketed. Gabori went on to exhibit at the Royal Academy of Arts in London and represented Australia in the 2013 Venice Biennale. The artist died at the age of 91 on February, 12, 2015 in Mornington Island, Australia.



**DADA SAMPSON
CONTEMPORARY ABORIGINAL ART COLLECTION**



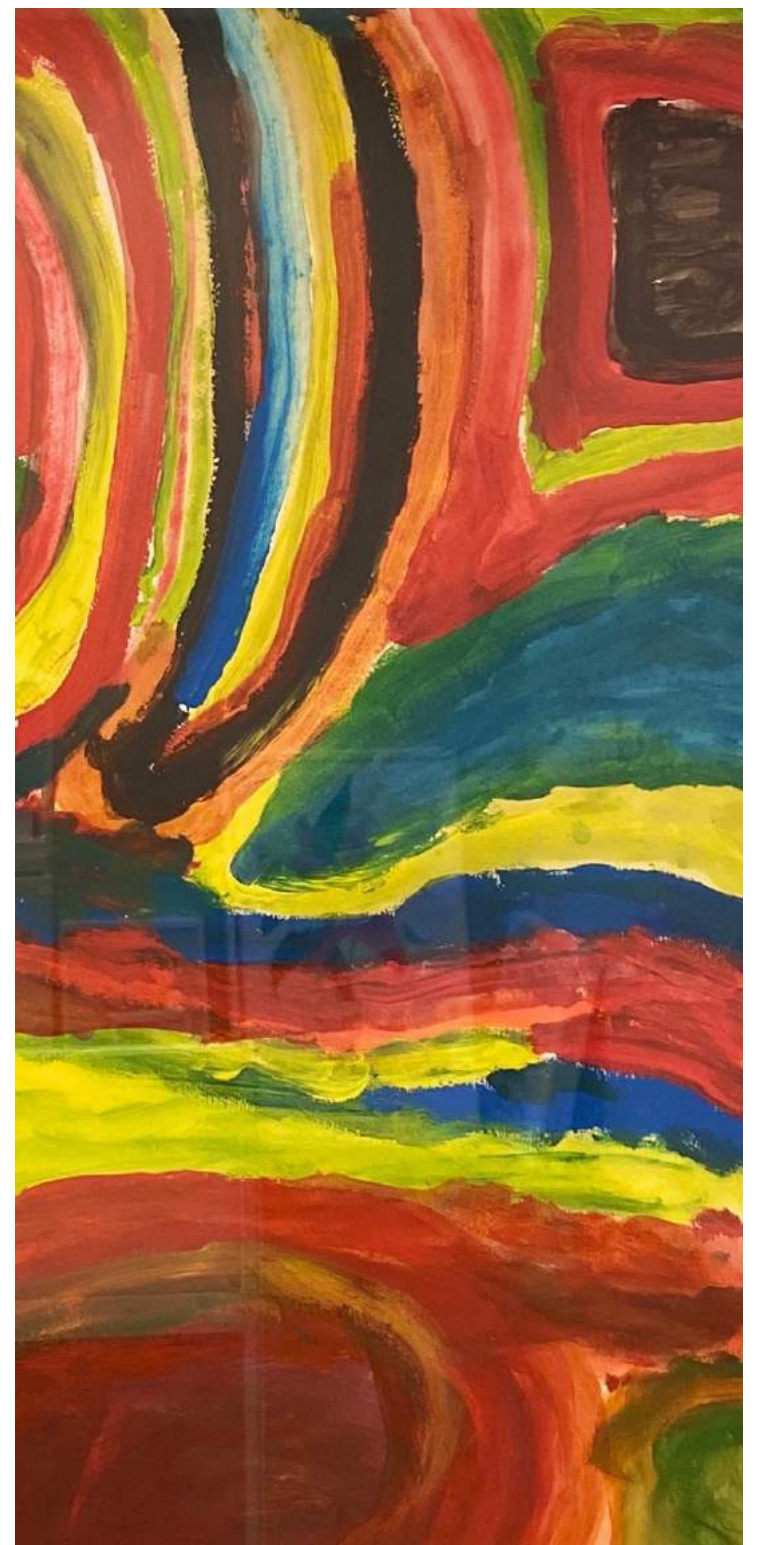
Martumilli Artists - Dadda Sampson - Acrylic on linen
112x 63cm - Private collection



**PAJI YANKAAR HONEY CHILD
CONTEMPORARY ABORIGINAL ART COLLECTION**



Paji Yankaar Honey Child – Acrylic on paper - 112 x 90cm
Private collection



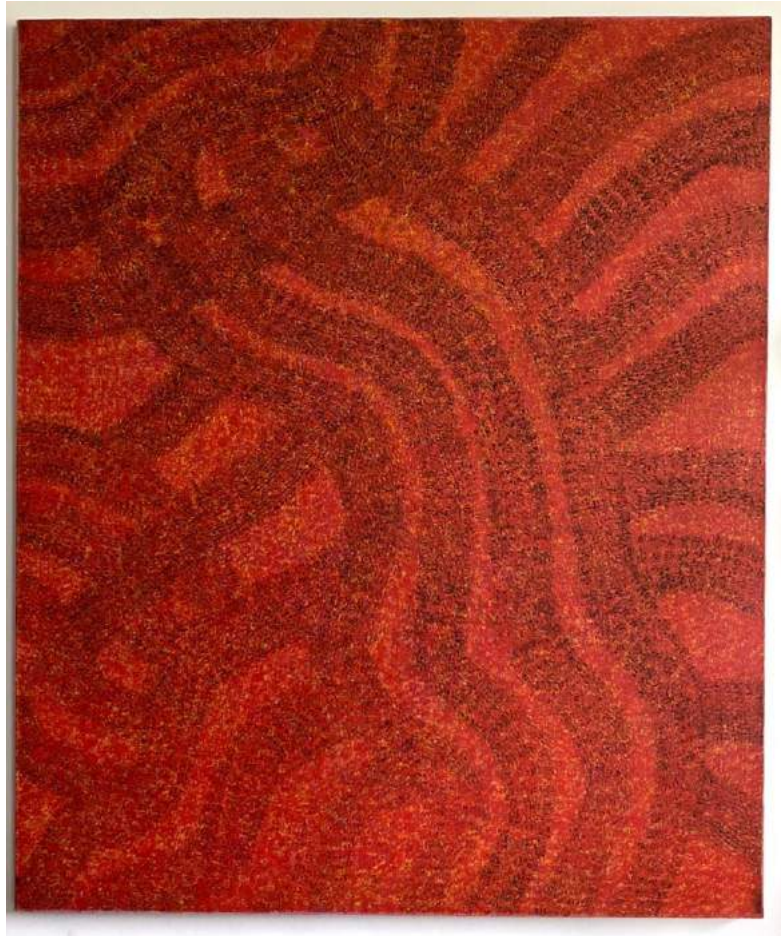
**PAJI YANKAAR HONEY CHILD
CONTEMPORARY ABORIGINAL ART COLLECTION**



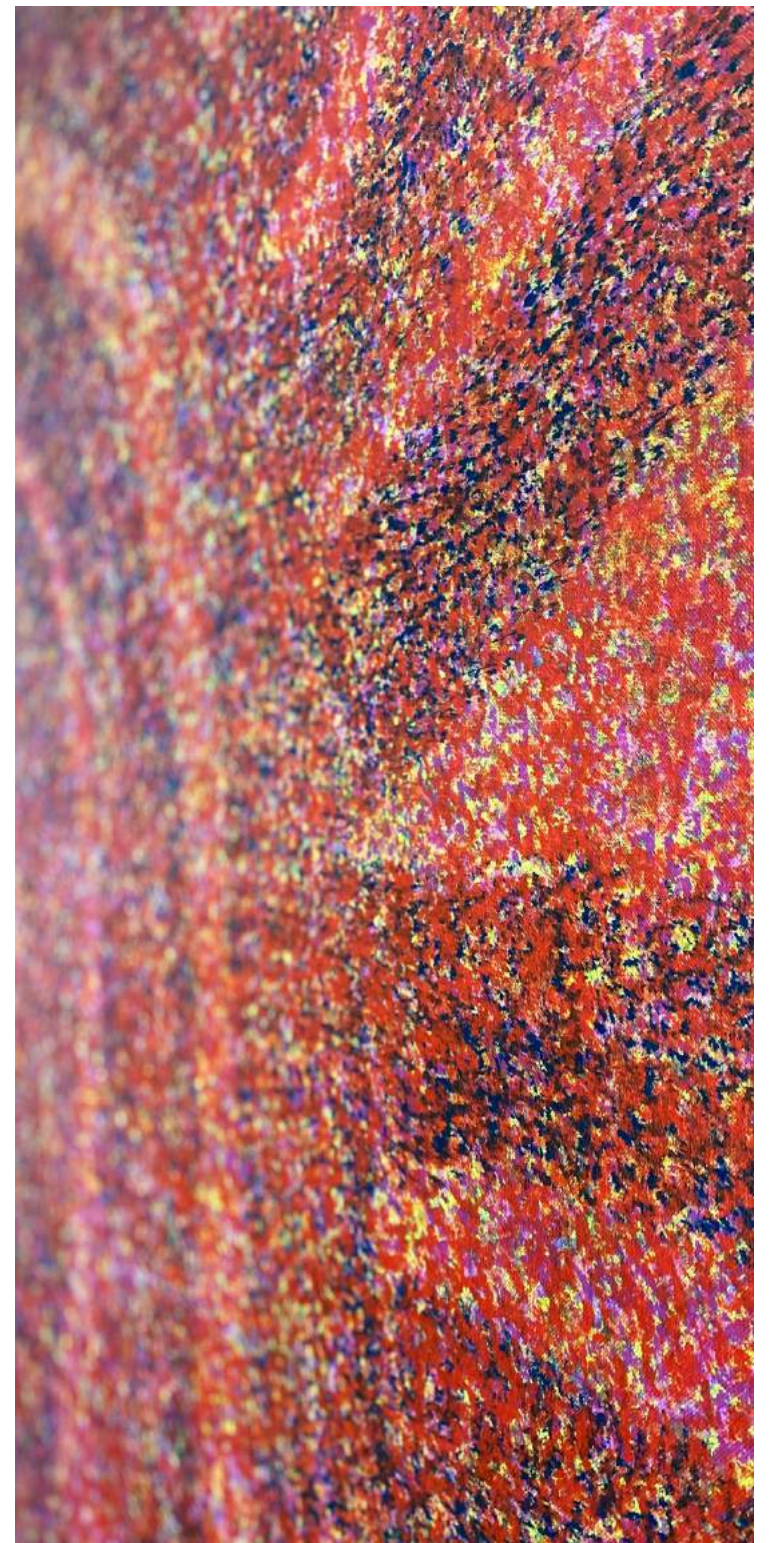
Paji Yankaar Honey Child – Acrylic on linen
60 x 80cm Private collection



**ALISON MULTA
CONTEMPORARY ABORIGINAL ART COLLECTION**



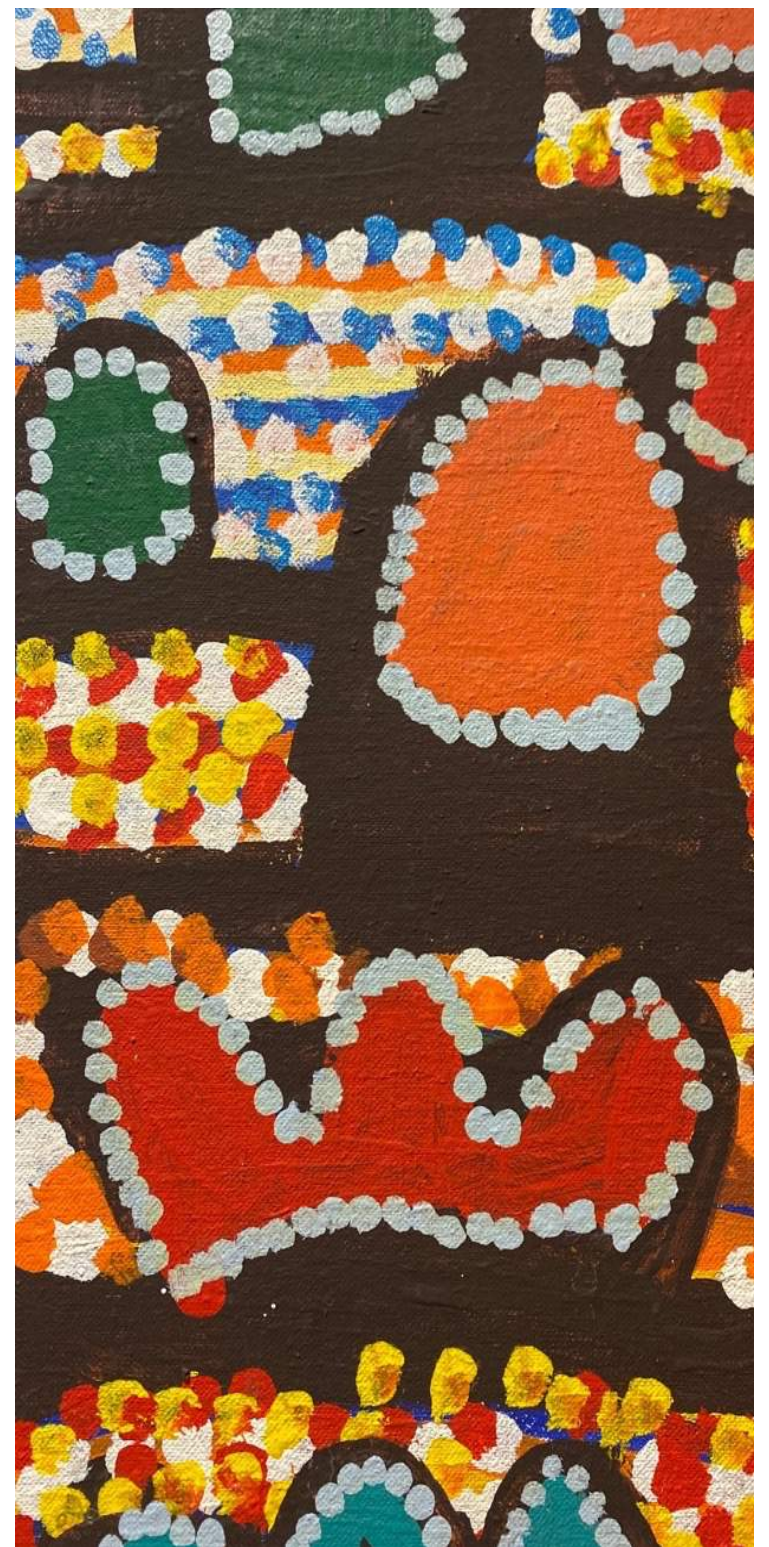
Aboriginal art Alison Multa – Bush Fire – Haas Bluff
Acrylic on linen 183 x 153cm Private collection



LINDA NGITJANTA
CONTEMPORARY ABORIGINAL ART COLLECTION



LINDA NGITJANTA – Acrylic on canvas - 62 x 122 cm
Private collection



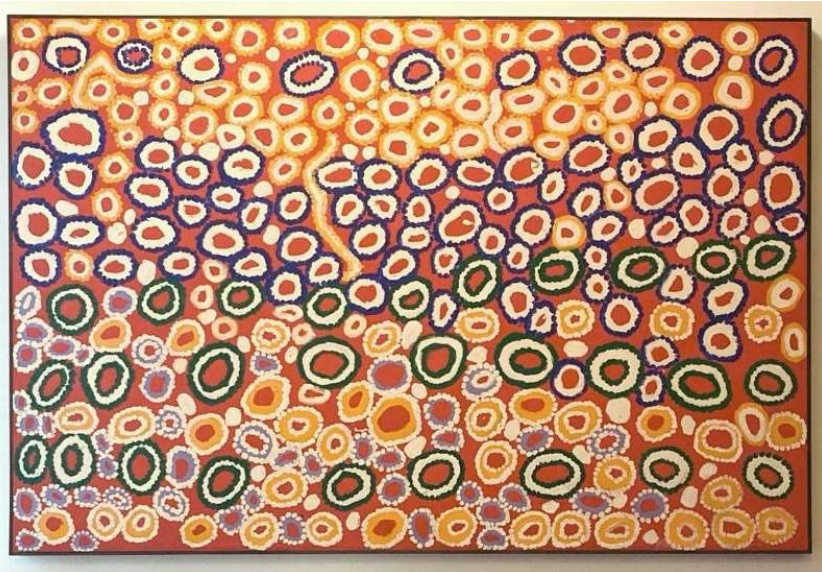
TARKU ROSIE TARCO
CONTEMPORARY ABORIGINAL ART COLLECTION



TARKU ROSIE TARCO
Acrylic on cotton duck 80 x 60 cm
Private collection



TIGER PALTAJA
CONTEMPORARY ABORIGINAL ART COLLECTION



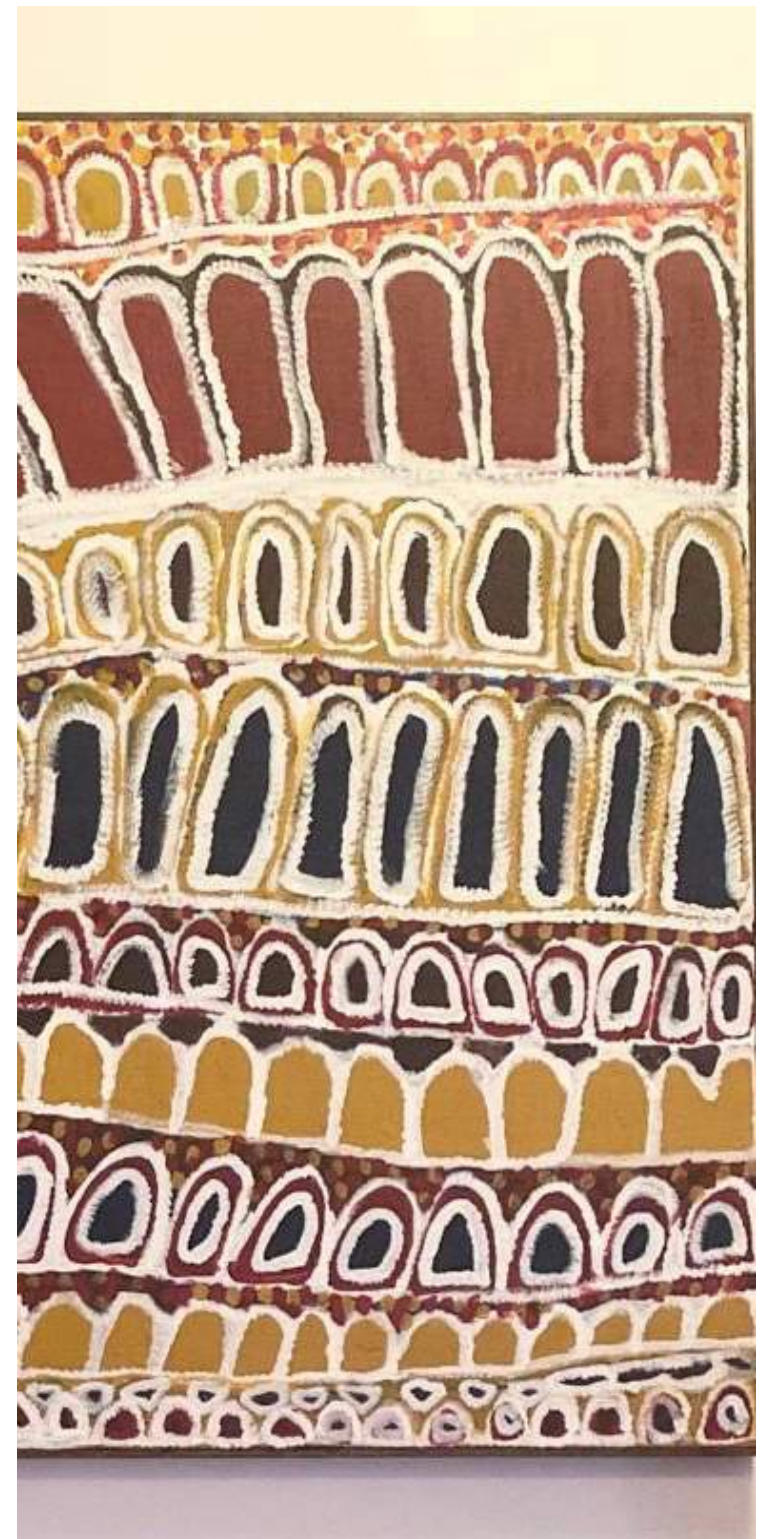
TIGER PALTAJA- Acrylic on Belgium linen
152,5 x 101.5 cm Private collection



NARPUTTA JUGADAI
CONTEMPORARY ABORIGINAL ART COLLECTION



NARPUTTA JUGADAI- Acrylic on linen
- 91 x 122 cm Private collection



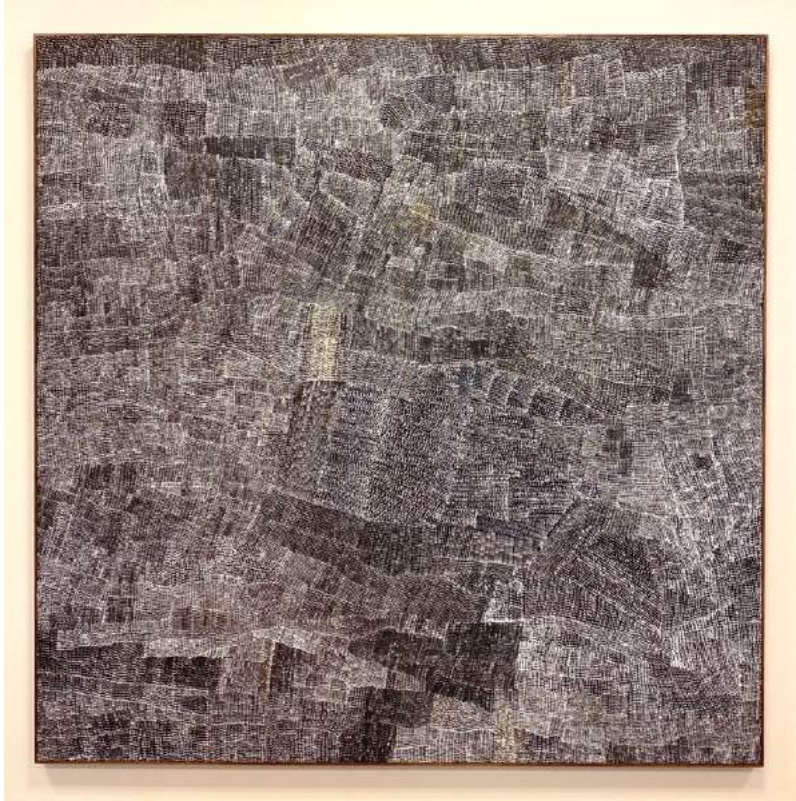
**ALMA NUNGARRAYI GRANITES
CONTEMPORARY ABORIGINAL ART COLLECTION**



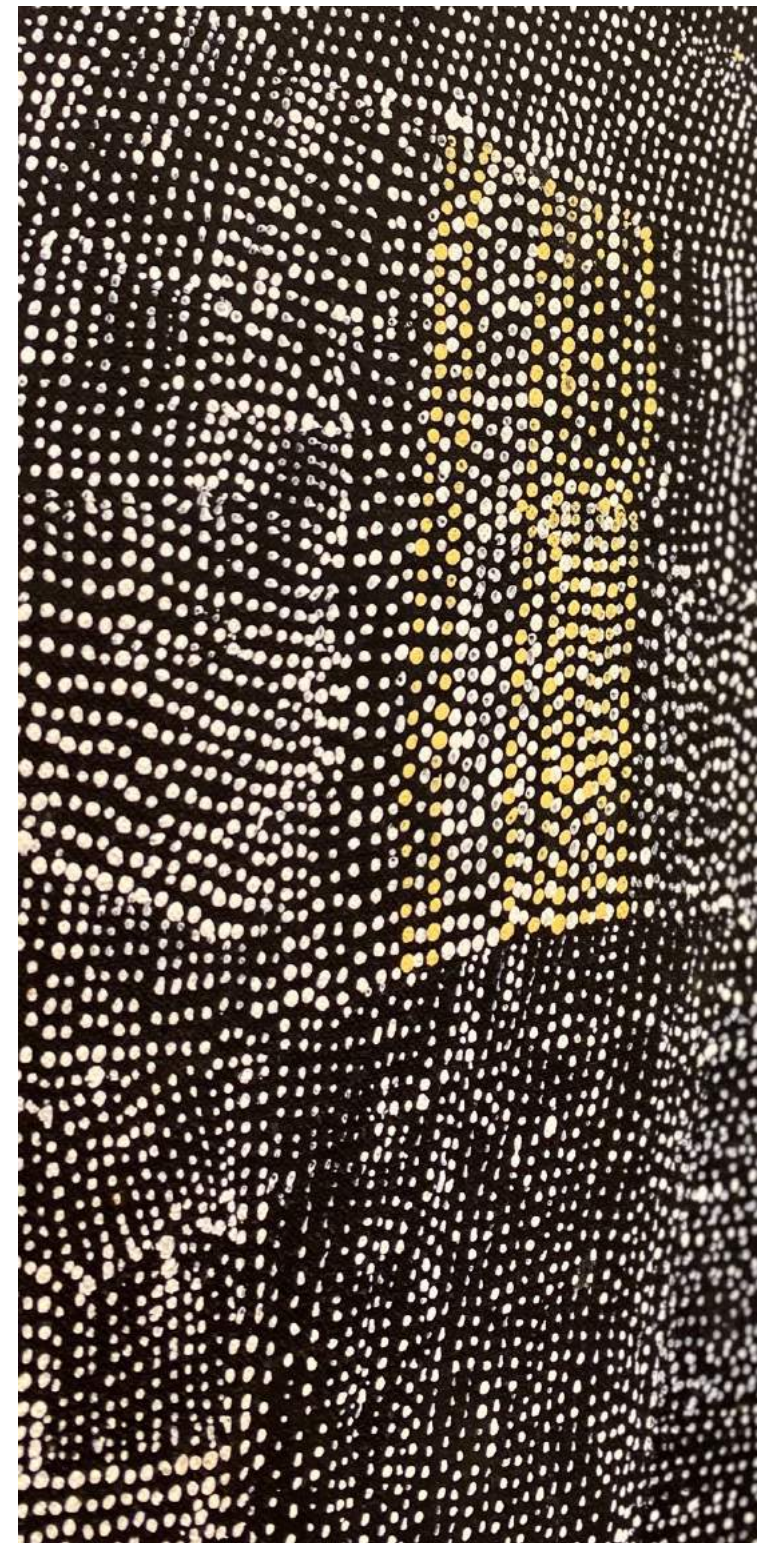
ALMA NUNGARRAYI GRANITES – Acrylic on canvas - 122 x 122 cm
x 2 pieces- Private collection -



WENTJA NAPALTJARRI TWO
CONTEMPORARY ABORIGINAL ART COLLECTION



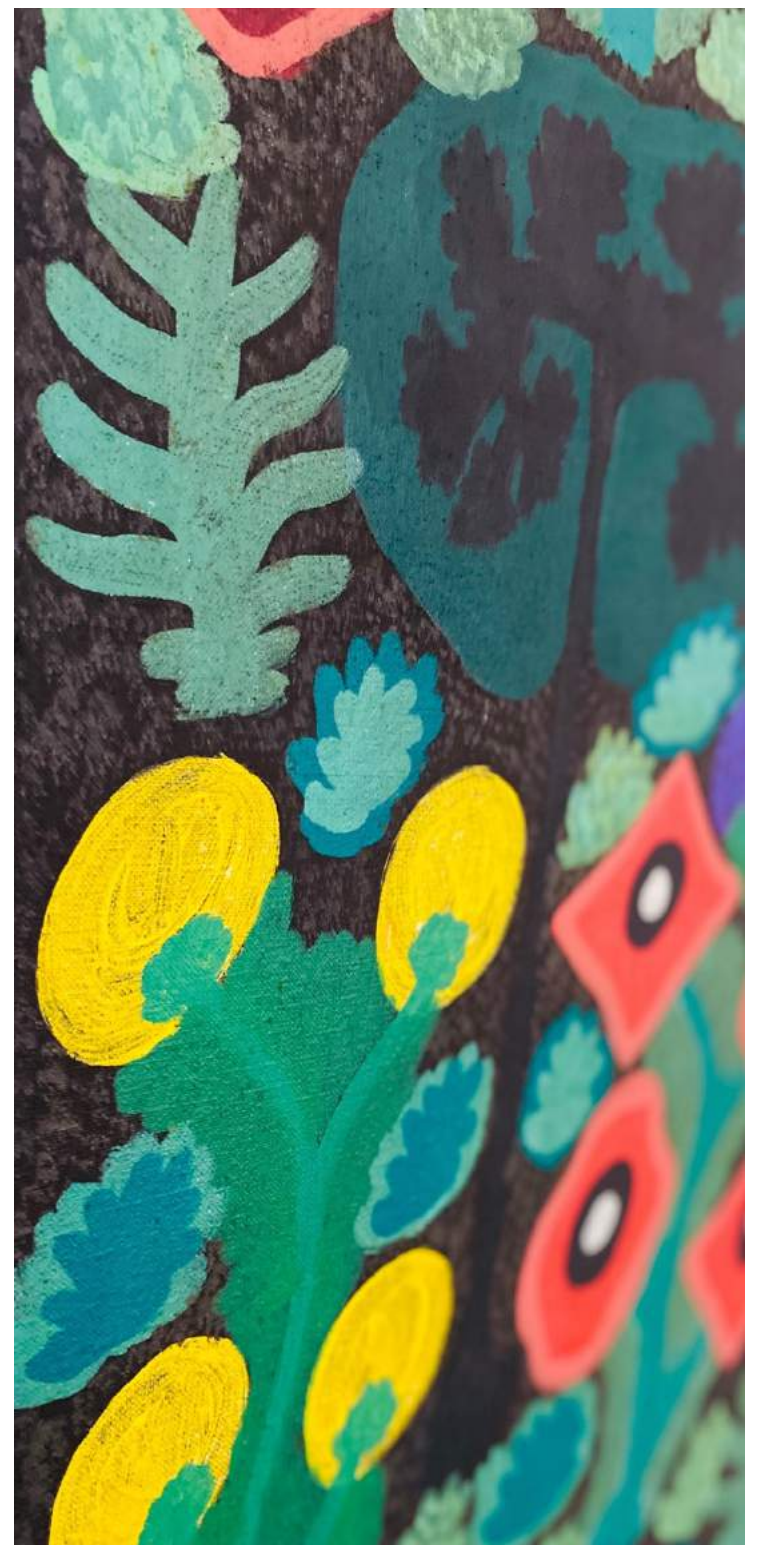
Wentja Napaltjarry Two Aboriginal art
Acrylic on linen 125 x 137cm
Private collection NOT FOR SALE



DAISY JUGADAI NAPALTJARRI
CONTEMPORARY ABORIGINAL ART COLLECTION



Daisy Jugadai Napaltjarri – Acrylic on linen
80 x 110cm - Private collection



**LORRAINE DAYLIGHT
CONTEMPORARY ABORIGINAL ART COLLECTION**



LORRAINE DAYLIGHT – MGUMBA WURREN - WARMUN Community
45 x 125cm Private collection



**RAY KEN
CONTEMPORARY ABORIGINAL ART COLLECTION**



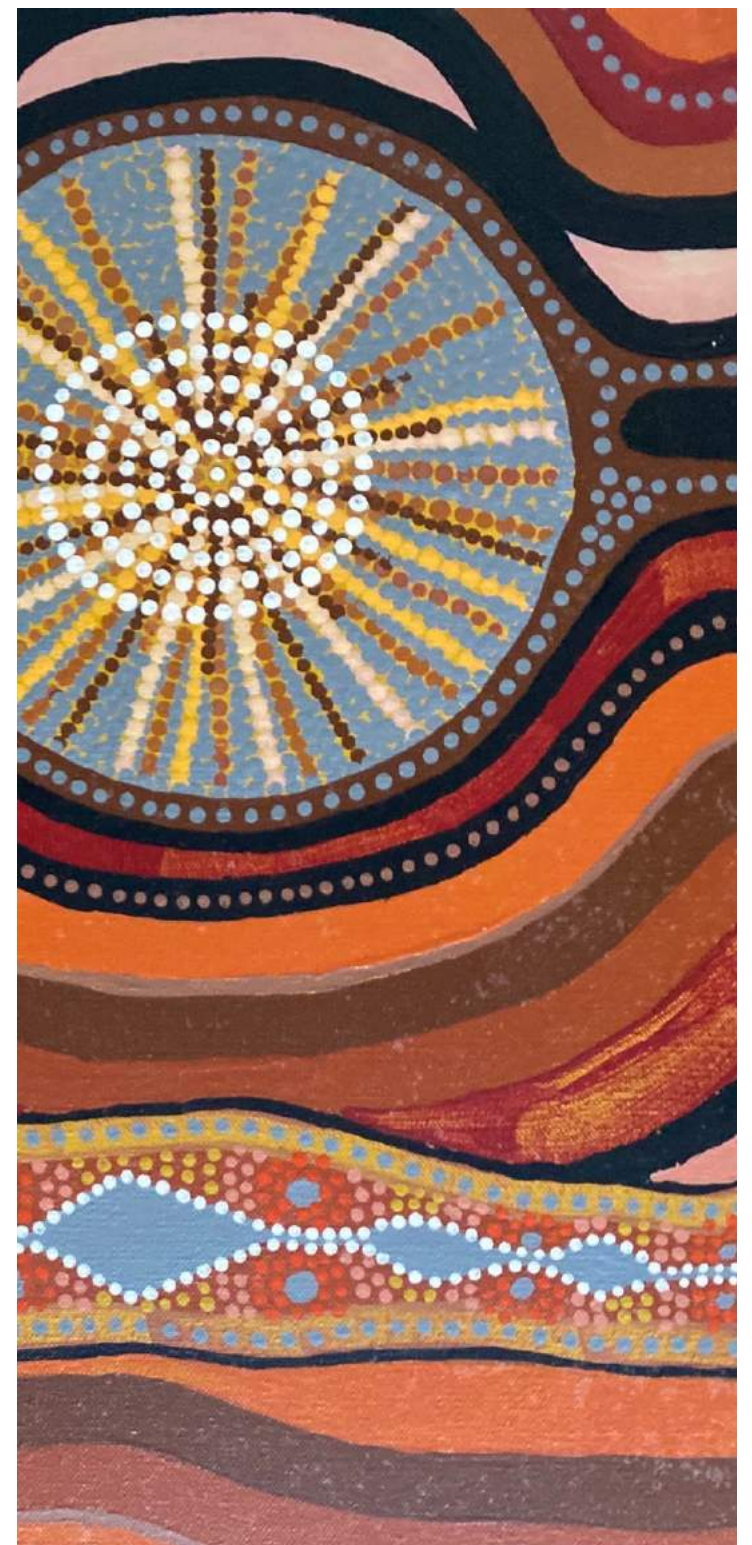
RAY KEN – Lift ground etching - 65 x 45cm - Private collection



**DAVID ROBERTSON
CONTEMPORARY ABORIGINAL ART COLLECTION**



DAVID ROBERTSON – Serpent Dreaming Acrylic on canvas - 55 x 160cm
Private collection – Not For Sale



ANN NIU
CHINESE STREET ARTIST



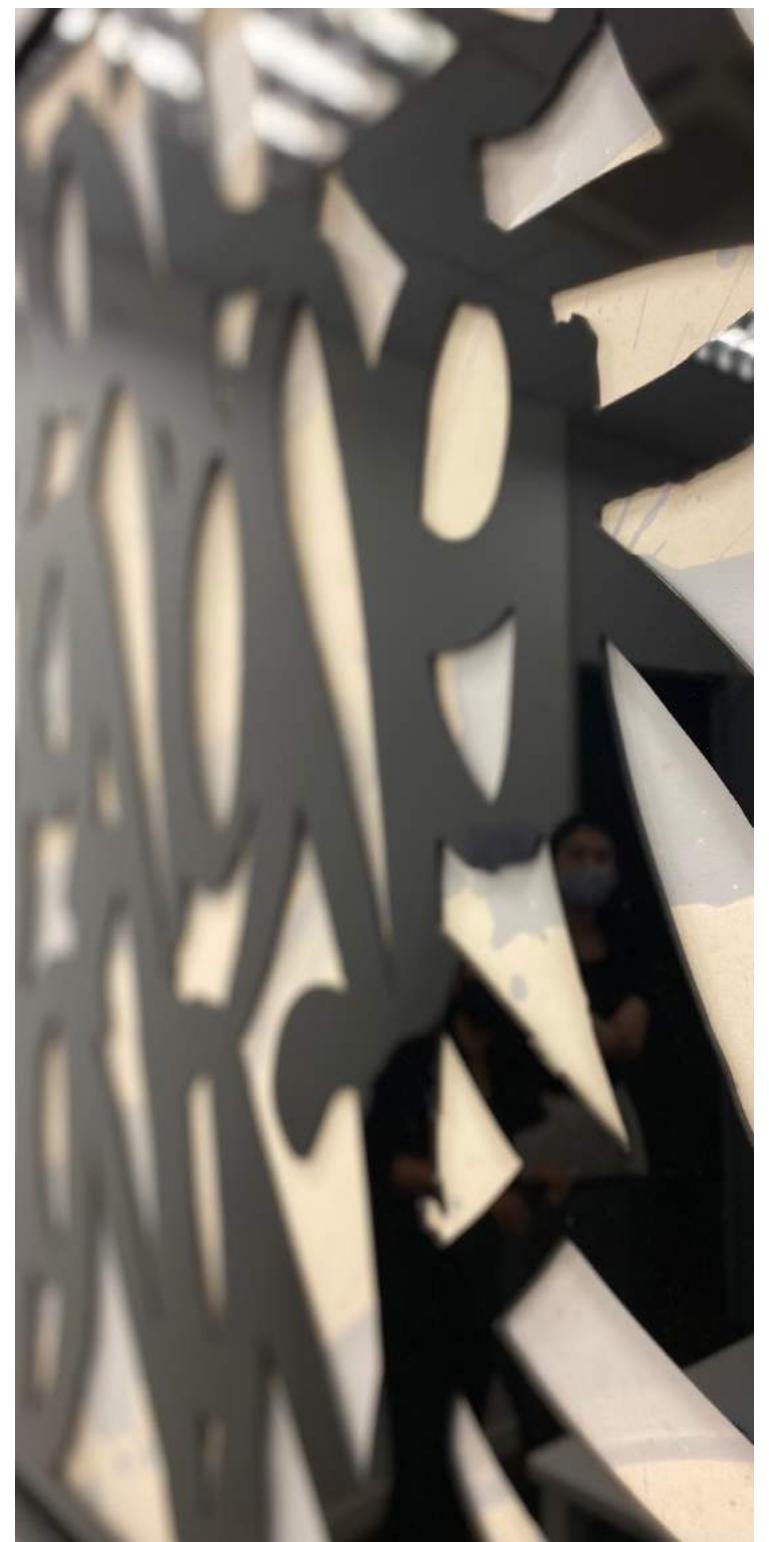
ANN NIU – Everywhere - Acrylic on canvas - 142 x 142
cm Private collection



JON ONE
FRENCH STREET ARTIST



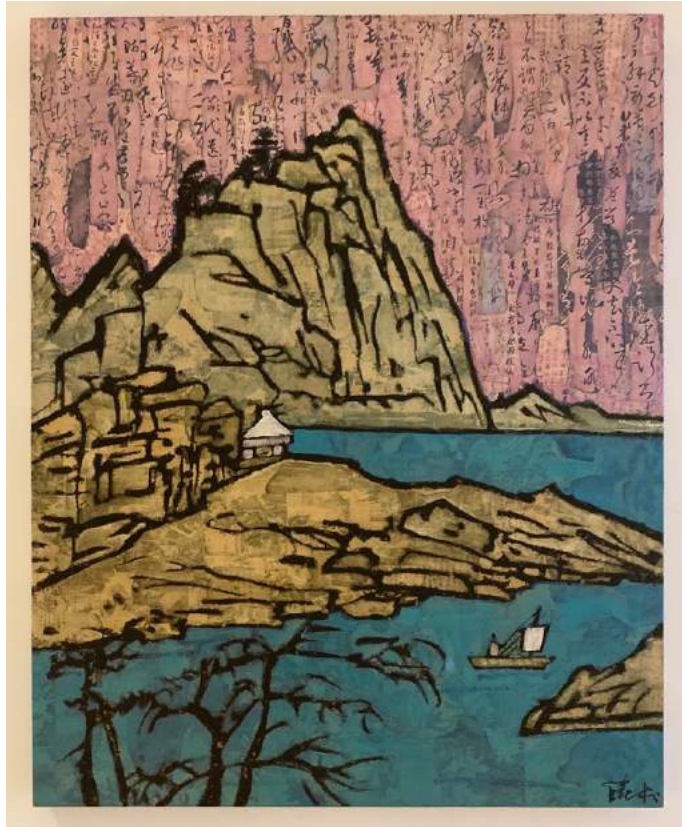
JON ONE - 65 x 65cm – Cut out mixed media
Private collection NOT FOR SALE



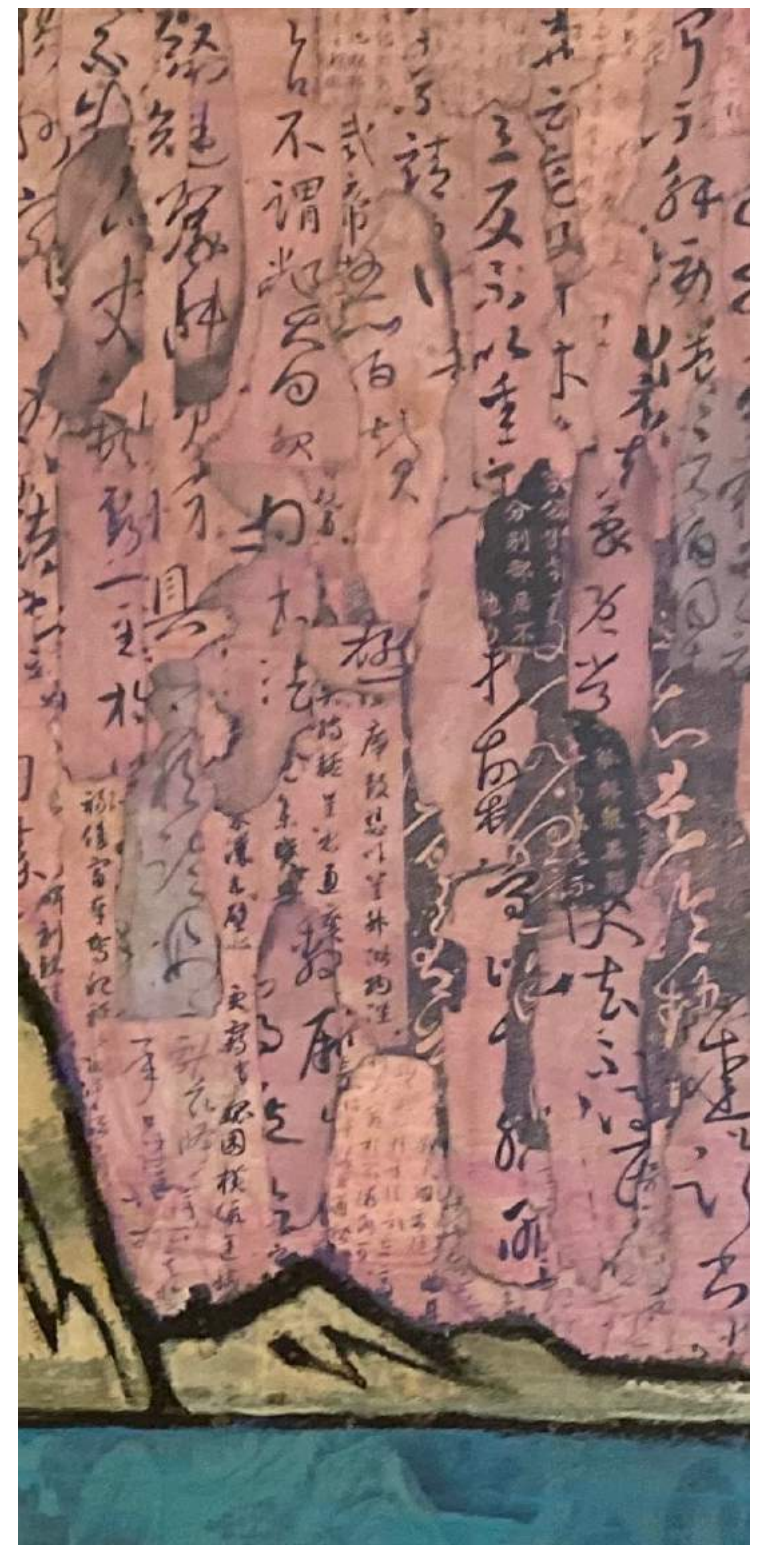


MARINA DESIGN WORKS

XUE SONG
CHINESE CONTEMPORARY ARTIST



XUE SONG – Conversations with Hong Hen –
Mixed media on canvas - 100 x 80 cm
Private collection - Not for sale



WAYAN NOVI



Growing Bloom detail 2019, 120x100 cm



WAYAN NOVI BIOGRAPHY

Wayan Novi is a young artist recognised for his persistence in manipulating the eye's insensitivity in examining details, though the implementation of a collection of marks and dots that creates an impression of his imaginative natural landscape. His works are a marriage of folk art and pointillism, born as a deformation from the tradition of still-life painting which has been his vision since childhood.

The development of Wayan Novi's artistic practice grew alongside the rapid development that occurred in Bali; both became inseparable. The peculiarity of his work is the stylization or the composition of nature in a painting, and his expertise in creating density on a flat canvas, gradations.

Since his debut, Wayan Novi's work have been collected widely around Asia.2020

2020 Group show Art Porters

2020 Art Moments – Jakarta

2020 Yogya Annual Art - Jakarta

2020 "Flow of Poems - Donna Art Gallery
Taiwan

2017 Solo Show Landscapes of Memories
in Art Porters Singapore

WAYAN NOVI - ART PORTERS COLLECTION



WAYAN NOVI – RAIN FORREST
Dimensions 270 x 100 cm x 2 panels acrylic on canvas



KUMARI NAHAPPAN

Using art as a connective umbilical cord, Kumari Nahappan explores what deeply binds us to the rest of the universe. Her multidisciplinary artistic approach investigating several techniques, convey the idea of life as a meditative process through the completion of cycles.

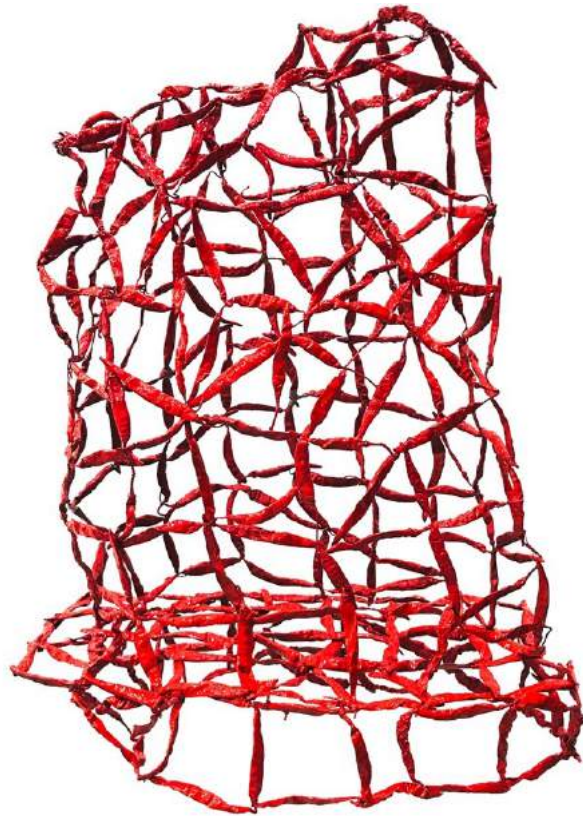
For more than 3 decades, no matter which medium she uses, the artist has been questioning the sense of space as well as the relation between inside and outside. Without any disruption, her artworks take the stage, engaging harmoniously with their environment, naturally incorporating their surroundings.

Like the seed containing in itself the principle of the tree, Kumari's sculptures and paintings express more than what one can see. They open the door to invisible human bounds with a cosmogonic approach to nature. They talk about a transient and crossing energy, about the abundance of life, about soul and spiritual principles. They convey the idea that the materials and the artworks' physicality express more than a simple image or a simple object. In that sense, her artistic gesture can be seen as an offering to each viewer, a reservoir of pure energy, connecting the dots and weaving a metaphysical web of connections in which we are invited to enter, play, live and express our gratitude with joy and our human soulful sense of personal spirit.

Introduction text by the artist Helene LE CHATELIER for SIGNALS EXHIBITION SINGAPORE



All her works is about seeds and motherhood,
a reservoir of latent energy, love, remembrance and longing



Crown Bronze - Unique
234(H) x 40(L) x 33(D) cm 2009

Sculpture & Conceptual Artist

Kumari Nahappan

For more than 3 decades, her artistic journey has seen her develop
An extensive body of works, including paintings, sculptures and installations
which have been exhibited internationally.

Her works have been exhibited at museums as well as galleries in Sweden,
Germany, London, Italy, New York, Australia, Hong Kong and China
Kumari is celebrated for her iconic sculptures in Singapore including *Nutmeg & Mace* for ION Orchard, *Pedas-Pedas* for National Museum, Pembungaan for OUE Bayfront and other sculptures for corporate developments. Her sculptures have graced sites overseas including G Tower in Kuala Lumpur, the J.Y.Campos Centre in Manilla and Zongshan Park in Shanghai.

Recent exhibitions:

2019 Talk Time - Venice International Biennale

2019 Motherhood @SPRMRKT - Singapore

2018 Royal Art Prize - London & Art Dubai

Prize & Award: Sculpture exhibition Shanghai Art Fair PRC

Charities supported: Children with Cancer & The Ireland Funds Singapore

The **SAGA SEED** is a reservoir for latent energy.

The color red signifies the range of emotions that the saga is associated with:
Love, Blood, intensity, passion, remembrance and longing.



KUMARI NAHAPPAN COLLECTION



KUMARI NAHAPPAN – BRONZE SAGA SEEDS ON CANVAS PANELS
Dimensions 40 x 80cm



KUMARI NAHAPPAN – BRONZE SEEDS ON CANVAS PANELS
Dimensions 30 x 27cm



KUMARI NAHAPPAN – RED CHILLI CROWN Dimension H 200 X80x 80cm



KUMARI NAHAPPAN – RED CORDON WOOL SUSPENDED
Dimension H 230cm 50 x 50cm

KUMARI NAHAPPAN COLLECTION



Five Grains Bronze
234(H) x 40(L) x 33(D) cm 2009



No Expiry Date
Yarn, wire, banana fiber Variable dimensions 2018



MARINA DESIGN WORKS

KUMARI NAHAPPAN COLLECTION



Friendly Nellie
Bronze
12(H) x 21(L) x 15(D) cm 2013



Kirampu Cluster
Bronze
58(H) x 35(L) x 25(D) cm 2019



Malayana Seed
Bronze
17(H) x 20(L) x 20(D) cm 2013



Saga Seeds Composition 'Drops'
Installation on board with canvas 40 x 80 cm
2022



Mace
Bronze
15(H) x 13(L) x 13(D) cm 2009



Cardamoms
Bronze
10(H) x 20(L) x 9(D) cm and
8(H) x 20(L) x 8(D) 2021

DELPHINE COURTILLOT



Born in Paris, France 1972, lives and works in Amsterdam

1996 Graduated from Nationale Supérieure des Beaux-Arts, Paris

1996 Emily Carr Institute of Art and Design, Vancouver, Canada

Soloshows

2018 Danse Fossile, C&H Gallery, Amsterdam, Netherlands

2016 Two rooms of one's own, Molsdorf Palace, Erfurt, Germany

The Amsterdam Trail, Galerie Dick Meyer, Amsterdam, The Netherlands

2015 Atelier Familial, Luis Adelantado Gallery, Mexico City, Mexico

2014 Atelier Familial, Luis Adelantado Gallery, Valencia, Spain

2009 Raptures of the Deep, Roberts & Tilton Gallery, Los Angeles, USA

Groupshows

2021 Test case XXIII - European Ceramic Work Center (EKWC) - Oisterwijk, Netherlands

2018 See What You Know, Quartair, The Hague, Netherlands.

2017 Artist First Ceramic Plus, Francis Boeske Projects & Nieuw Dakota, Amsterdam, Netherlands

2015 Manifesten, Museum Kranenburgh, Bergen, The Netherlands.

2013 Women On Water - A tribute to Roni Horn, ASPN, Leipzig, Germany

2011 Between Two Worlds, Henry Art Gallery, Seattle, WA, USA.

2009 Ophelia, Melancholia and Desire for Death, Museum voor Moderne Kunst, Arnhem, Netherlands.

2008 Against Nature, Luis Adelantado Gallery, Valencia & Macrocosmos, Roberts & Tilton Gallery, LA,

2006 Strip, Kunsthau Baselland MuttENZ, Switzerland. Curator , WG/3 Zi/K/Bar- Malkasten, Düsseldorf.

2005 ASPN, Leipzig, Germany & Trip, Kunstverein Hannover, Germany. Curator : Rolf Bier

Strip, Projektraum Deutscher Künstlerbund, Berlin, Germany.

2004 Day Dreaming, Slight Alienation, Cruel Kindness and Detached Sentimentality, Joymore,

Brooklyn, USA. Curator : Carlos Roque 2003

2012 Cry Trojans Costume & Stage Design for the Wooster Group (NY, USA) Collab with Folkert de Jong

Residencies

2021 European Ceramic Work Center (EKWC), Oisterwijk, The Netherlands 2010

2020 Künstlerhaus Bethanien, Berlin, Germany

2006 Spinnerei Leipzig, Germany

2003 Kunst en Complex, Rotterdam, Netherlands

CEAC Chinese European Art Center Xiamen, China 2002 Bergen, Norway

1999 Cité Internationale des Arts, Paris, France Awards & Grants

1998 Colin-Lefrancq Prize for Figurative Painting

Collections

-Chadha Art Collection Amsterdam, Netherlands

-Pérez Art Museum Miami, Miami, FL, USA

-Henry Art Gallery, Seattle, WA, USA

-Her works is part prestigious private Collections in USA, France, Germany and the Netherlands

DELPHINE COURTILOT CERAMIC SCULPTURES



Senseless, 2017, 76 x 24 x 26 cm Ceramic



Refuge, 2018, 75 x 35 x 25cm, glazed ceramic



Sorceress Voice, 2017, 70 x 40 x 28 cm, Ceramic

LI DE ZHUANG PRESENTED BY OLAL ART

Cross~Border Artist Li Dezhuang

Cross~Border Artist Li Dezhuang has been living in Singapore, where he was born, during the COVID-19 pandemic, so we have the opportunity to present four of his abstract landscape paintings in ink and acrylic on paper in this group exhibition. These four paintings were made in 2010 and 2012 respectively. Li Dezhuang revealed that this series of abstract color and ink landscape paintings was a brief review of his artistic creation before he embarked on a new journey, launched the brand-new well Mountain and Farmland Series(WMF Series) series and entered the field of cross-border art. In this way, these sketches can also be regarded as one of the important works of the artist at an important creative turning point.



Abstract Landscape Three 抽象彩墨(三)10.3x14.3
Ink and Acrylic on Paper 水墨丙烯纸本 2010 Li
Dezhuang(李德莊).JPG



Abstract Landscape One 抽象彩墨(一)20x14.3cm
Ink and Acrylic on Paper 水墨丙烯纸本 2012 Li
Dezhuang(李德莊) (2).jpg



Abstract Landscape Four 抽象彩墨(四)
10.3x14.3cm Ink and Acrylic 水墨丙烯纸本 on
Paper 2010 Li Dezhuang(李德莊)

LI DE ZHUANG



跨界艺术家李德庄Li Dezhuang, 新冠疫情期间一直在他出生地新加坡居住, 因此我们这次的群展中有机会展示他 四幅水墨丙烯纸本抽象风景画。这四幅画作分别在2010和2012年的作品。李德庄透露这一系列抽象彩墨风景画是他在迈步朝向一个新的征程, 开展全新开创的井山田系列和进军跨界艺术领域之前, 做了一个简单的艺术创作回顾。

如此看来, 这些小品画作也可以说成属于艺术家在一个重要创作转折点的重要作品之一。



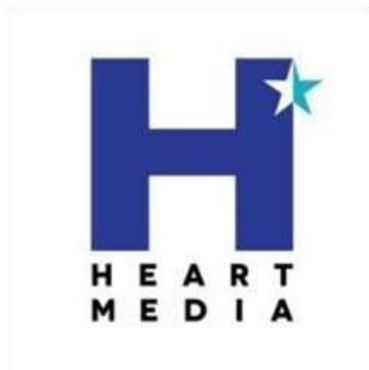
MARINA DESIGN WORKS

SIGNALS exhibition is organized by Marina Design Works and Olal Art. We are a group TOTEM ART COLLECTIVE of French and Chinese art consultants with the aim to foster art collaboration in Asia.



OLAL'ART

A warm thank you to our contributors Heart Media, Digital Media Partner & AGAS Art Gallery Association Singapore:





MARINA DESIGN WORKS